



SCORM for CD ROM

The SCORM for CD ROM application allows students to experience your SCORM training content on their local PCs without developers having to modify existing SCORM content. The SCORM for CD ROM application allows students to create a user name or use their student id, or other id that you define, to log into the system. All student identification numbers are encrypted in the storage media so that this information can not be obtained by other users. If they use a name or id that is not recognized by the system then the student will be asked to fill in their name and create a password, then they are forwarded along to the course Table of Content.

The SCORM for CD ROM system itself supports both SCORM 1.2 and SCORM 2004 runtime and some of the SCORM 2004 sequencing and navigation. SCORM for CD ROM is written in JavaScript and uses FLASH Shared Objects (FSO) and/or cookies as the mechanism to store user data on the local machine.

The SCORM 4 CD ROM application is highly configurable both at the interface level and the functional level SCORM 4 CD ROM has been tested to run on the following browsers;

- * - Safari 4.0 (530.17) / XP SP3
- * - Safari 4.0.2 / OS X 10.5.7
- * - Chrome 2.0.172.33 / XP SP3
- * - IE 7.0 / XP SP3
- * - FireFox 3.5 / OS X 10.5.7
- * - FireFox 3.0 / XP SP3
- * - IE 8.0 / Server 2003 SP2
- * - IE 6.0 / Server 2003 SP2
- * - Opera 9.64 / XP SP3

Below are some examples of different interfaces that have been used in the past with the SCORM for CD ROM.

Example 1:

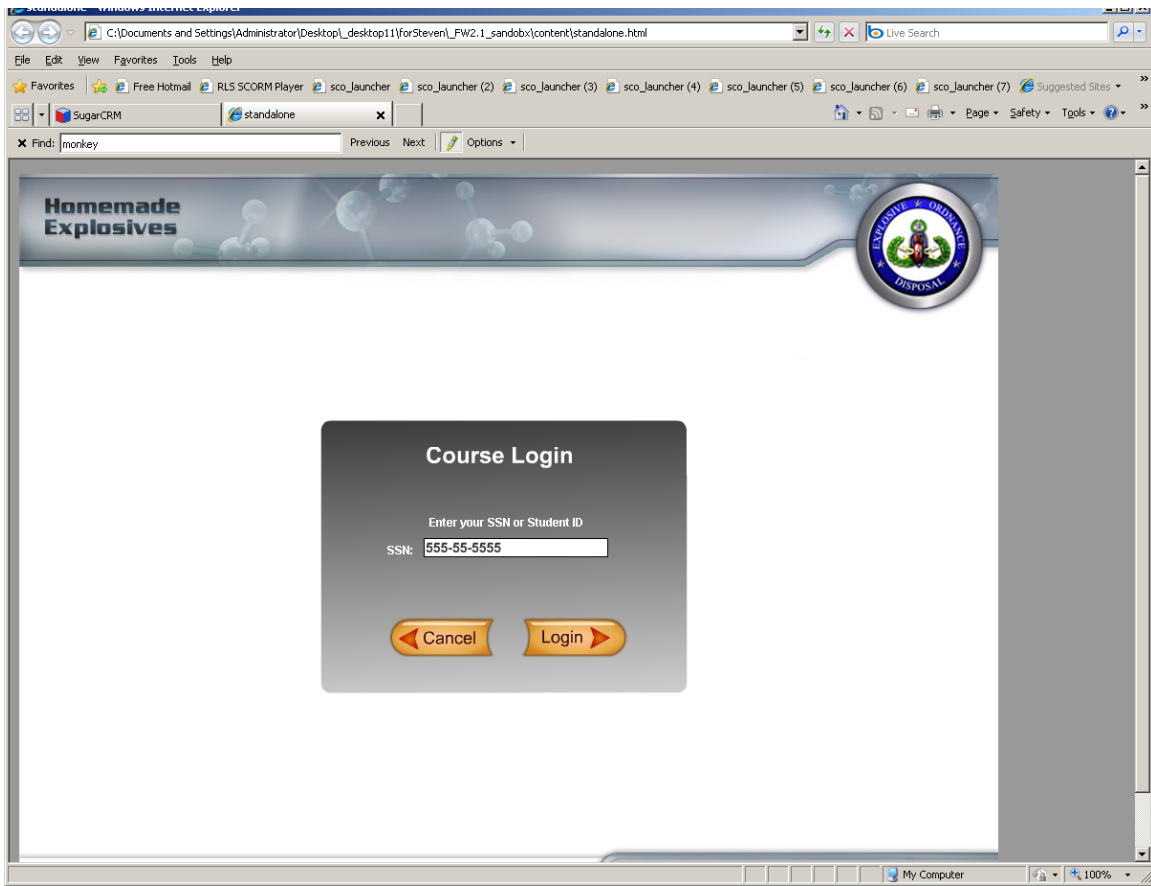


Figure 1 : Social Security Login

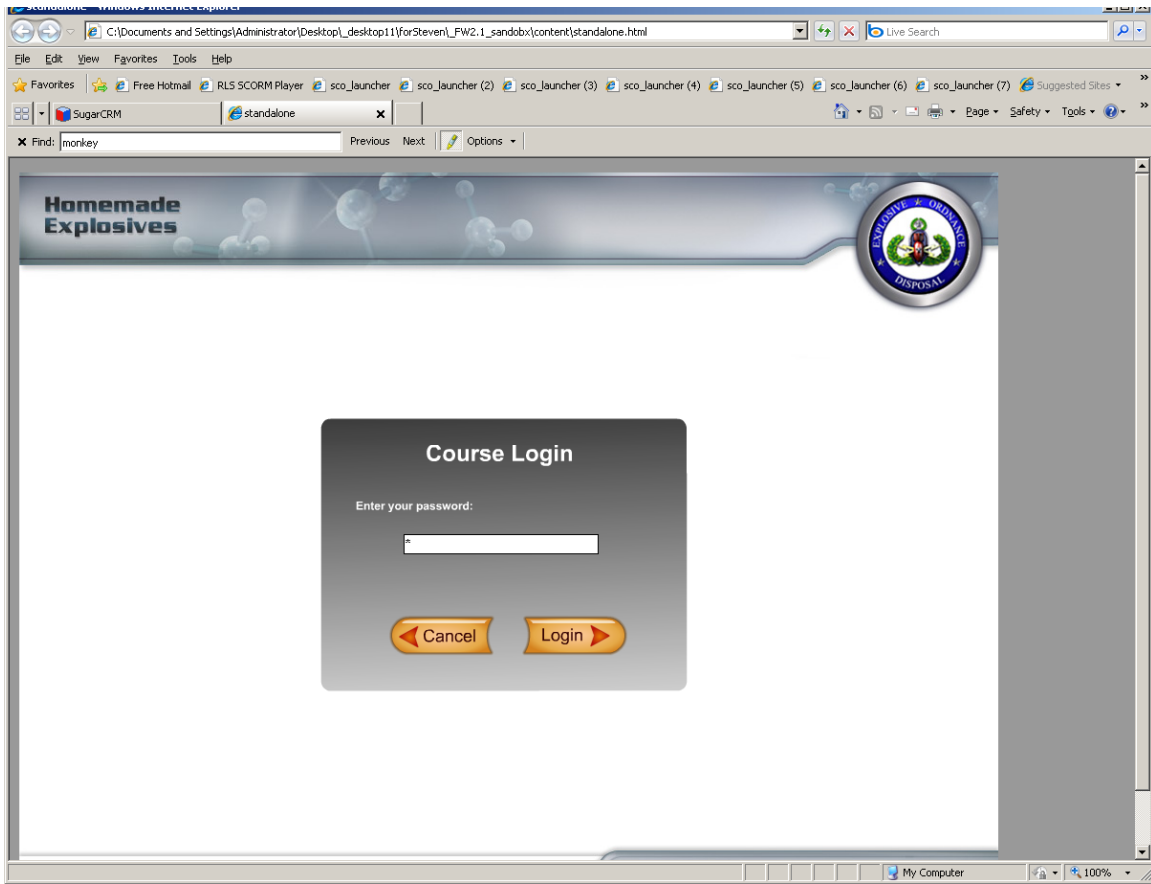


Figure 2: Password screen

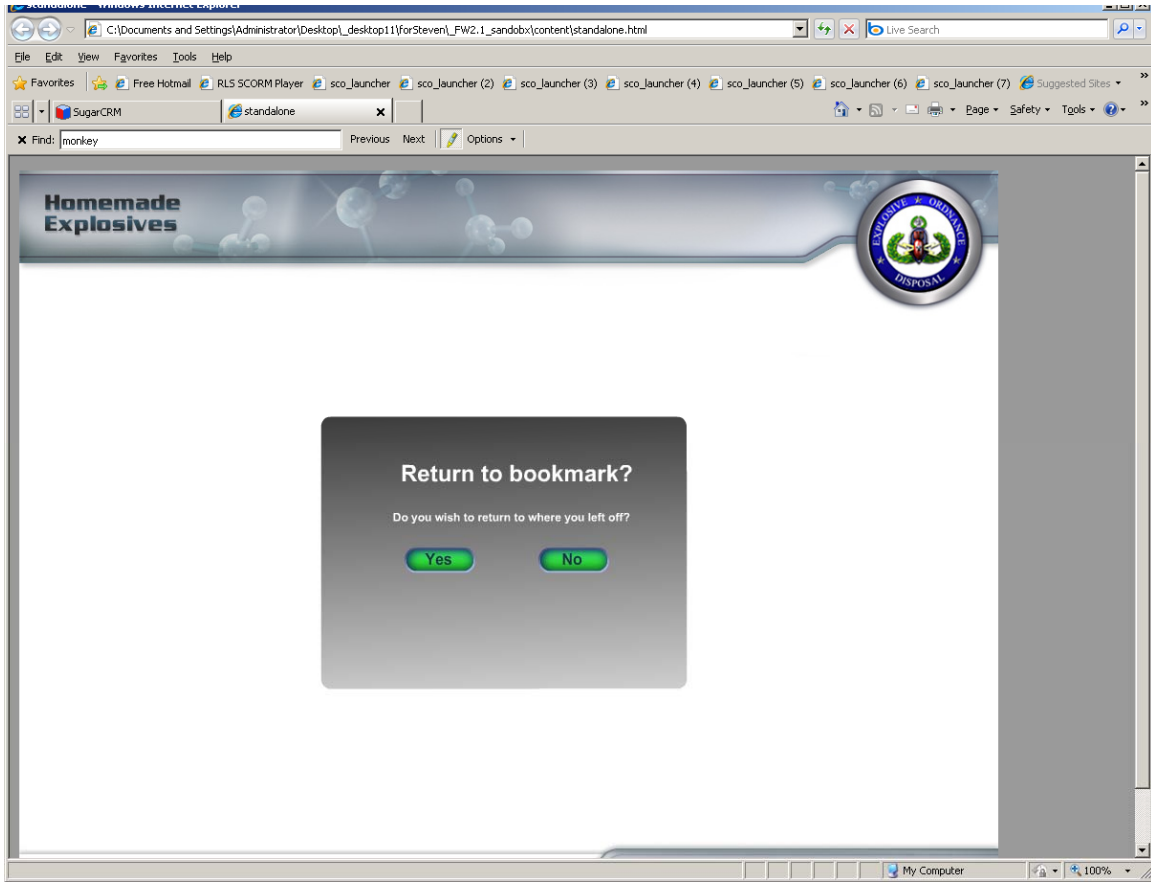


Figure 3: Return to bookmark screen. Clicking yes will take you directly to the Lesson and Topic that you left off on during your last session.

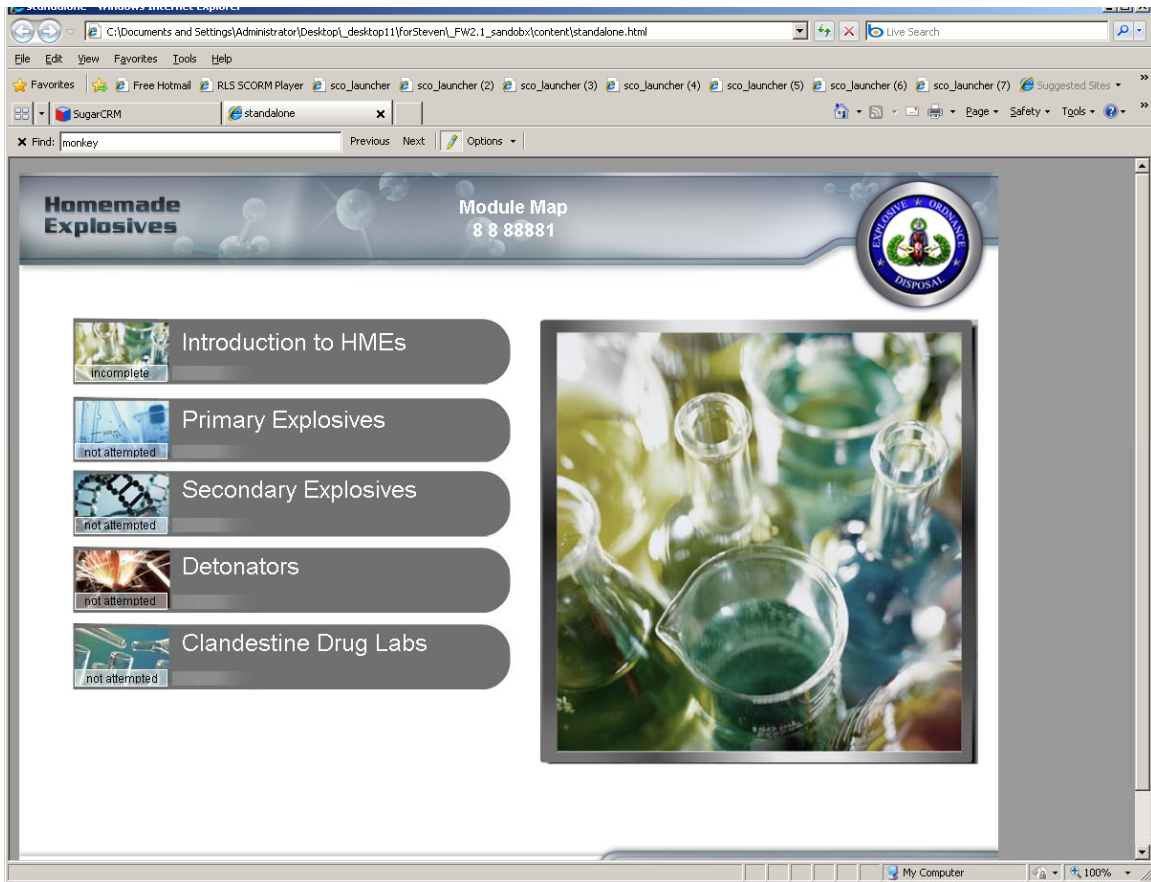


Figure 4: Table of Contents Module selection.

Example 2:

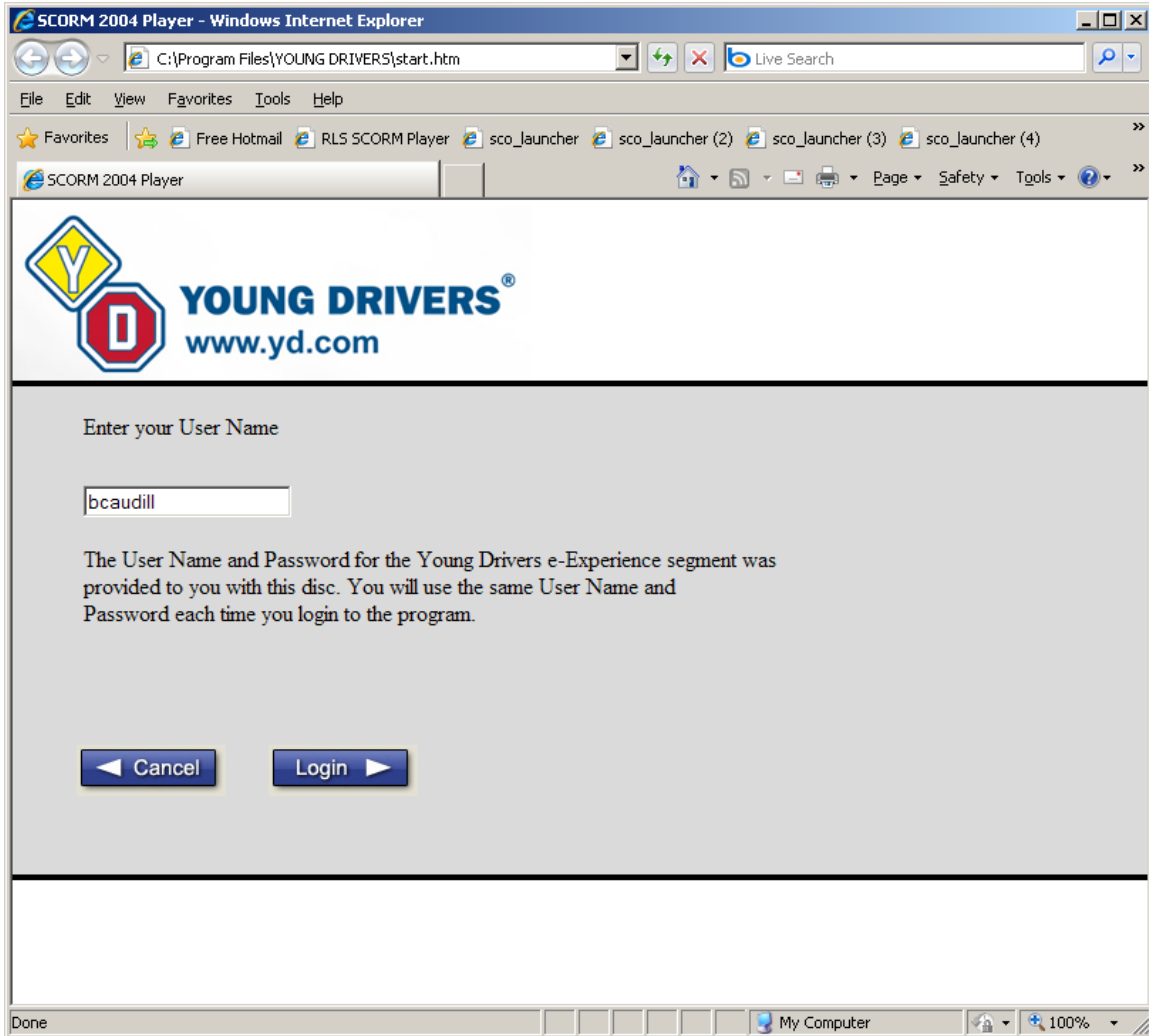


Figure 5: User name login

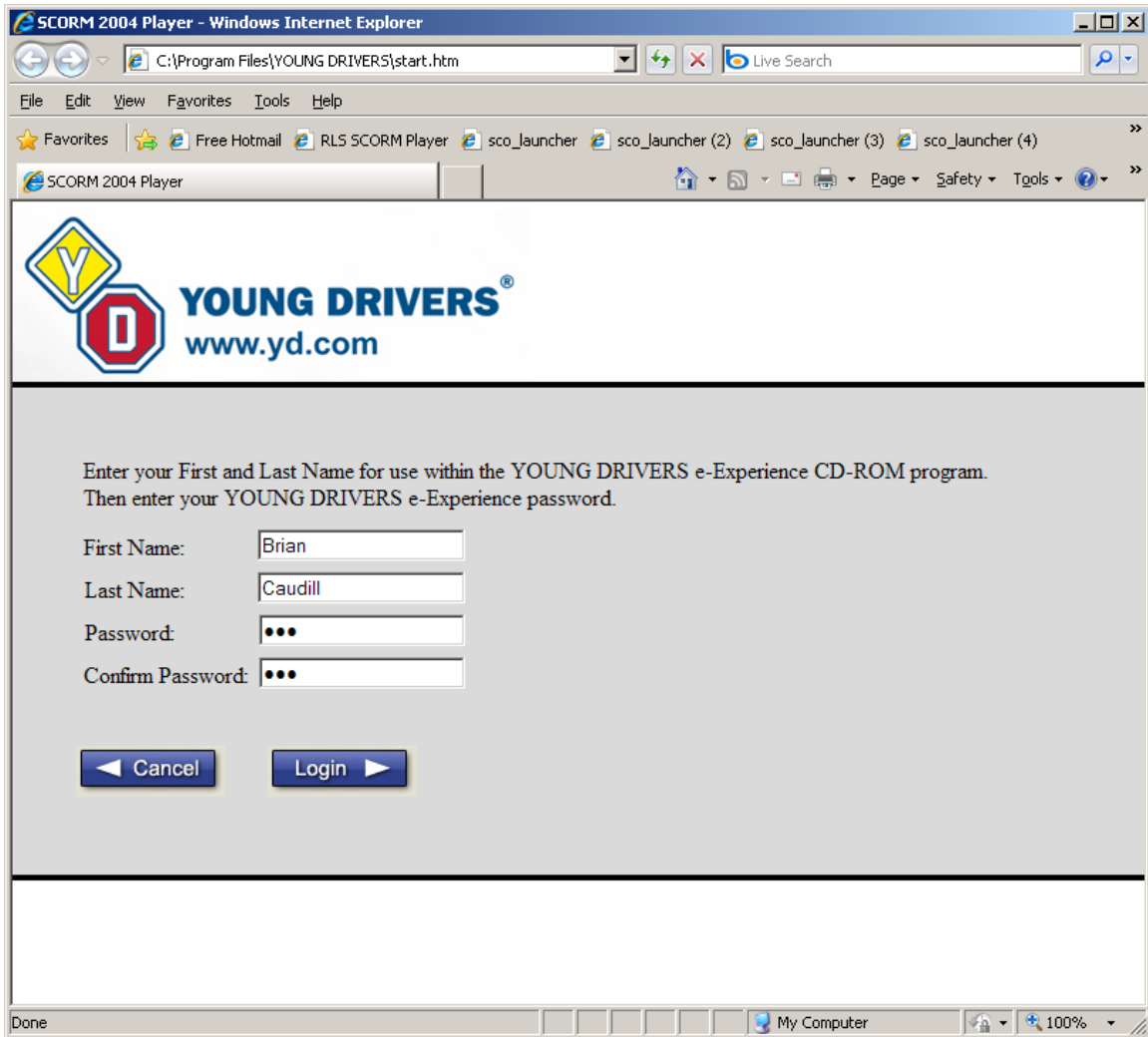


Figure 6: Create a new user in the system.

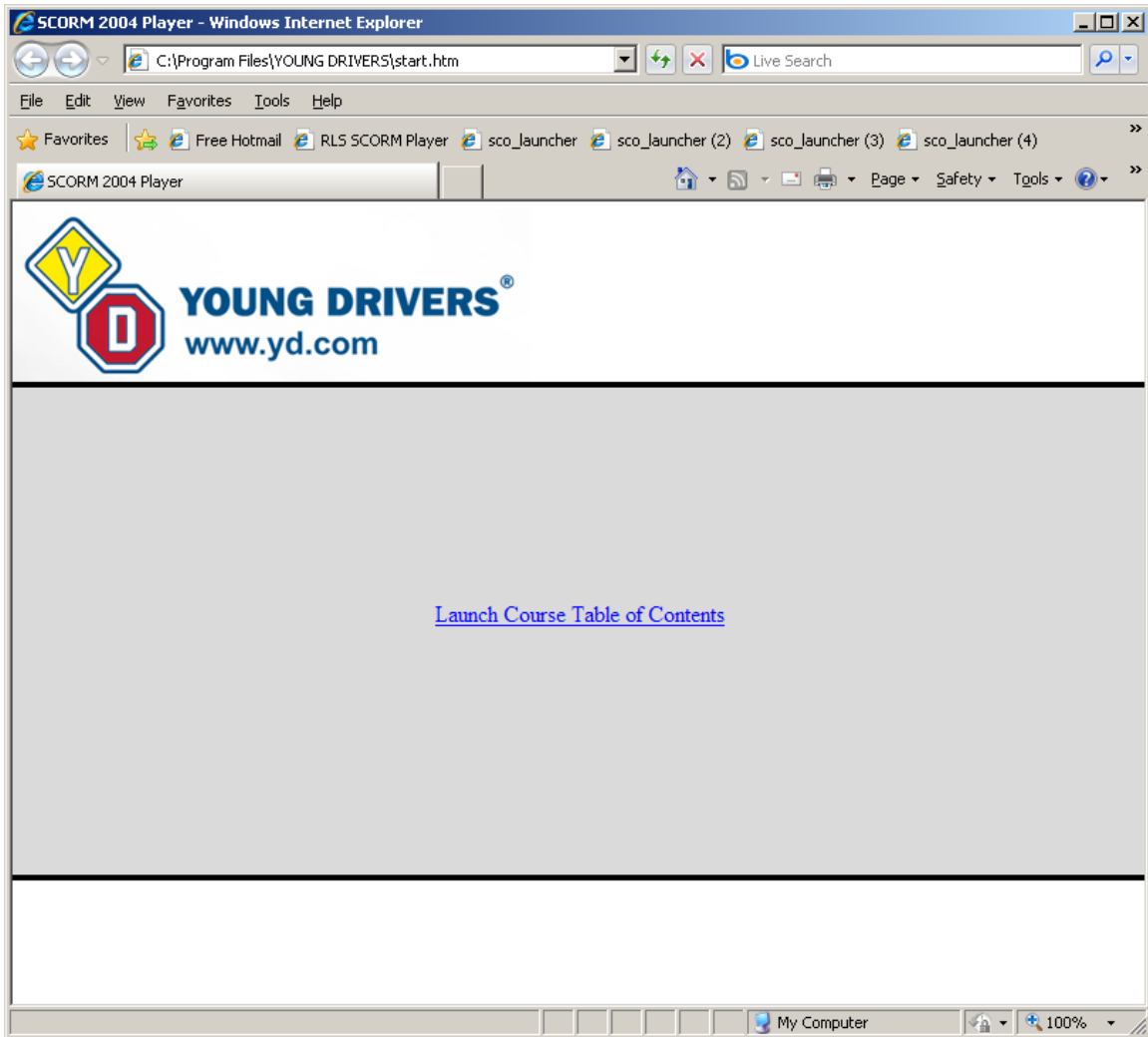


Figure 7: Launch the Table of Contents

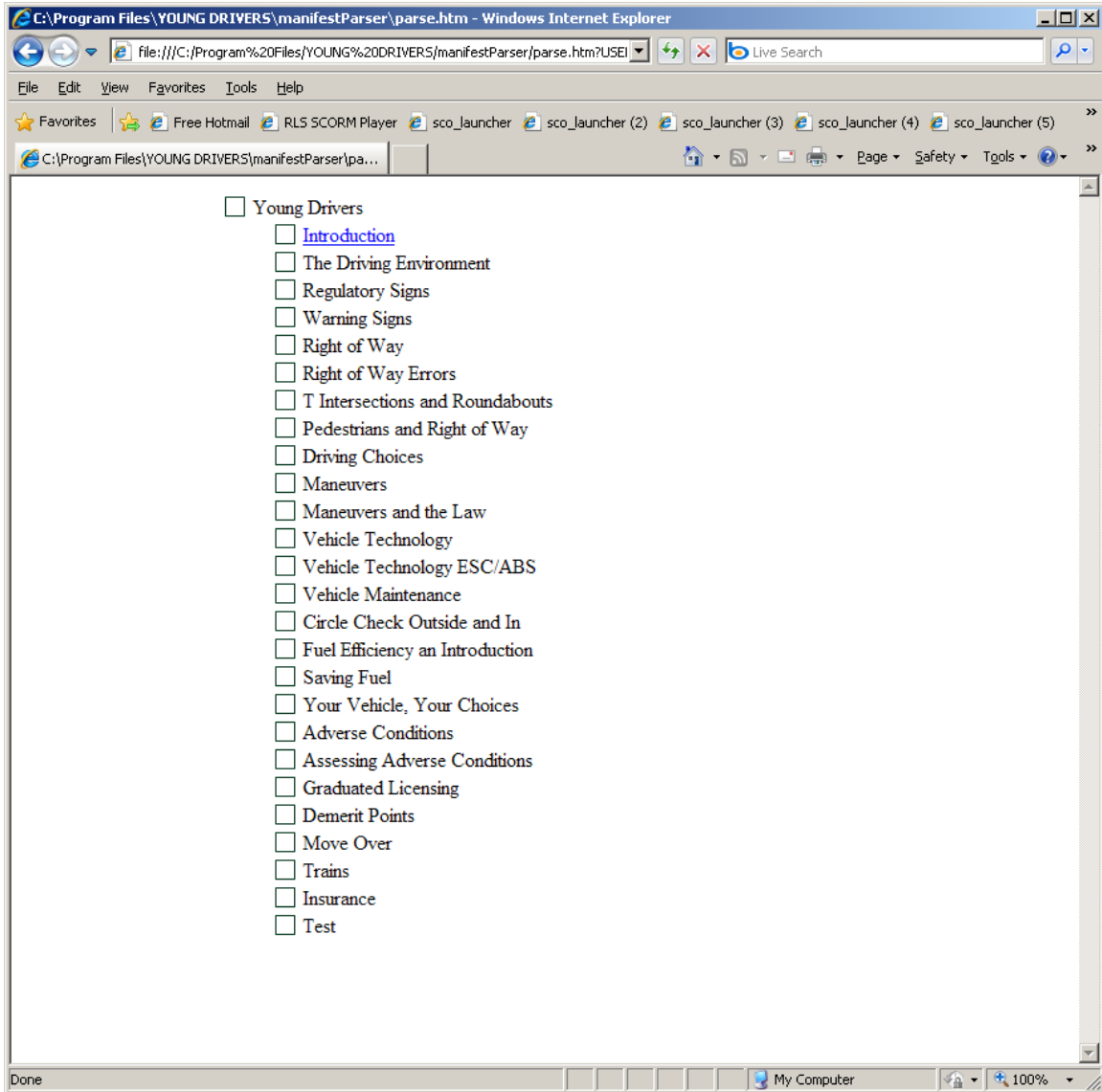


Figure 8: Course Table of Contents generated from the manifest file. In this example the content is lock-stepped.

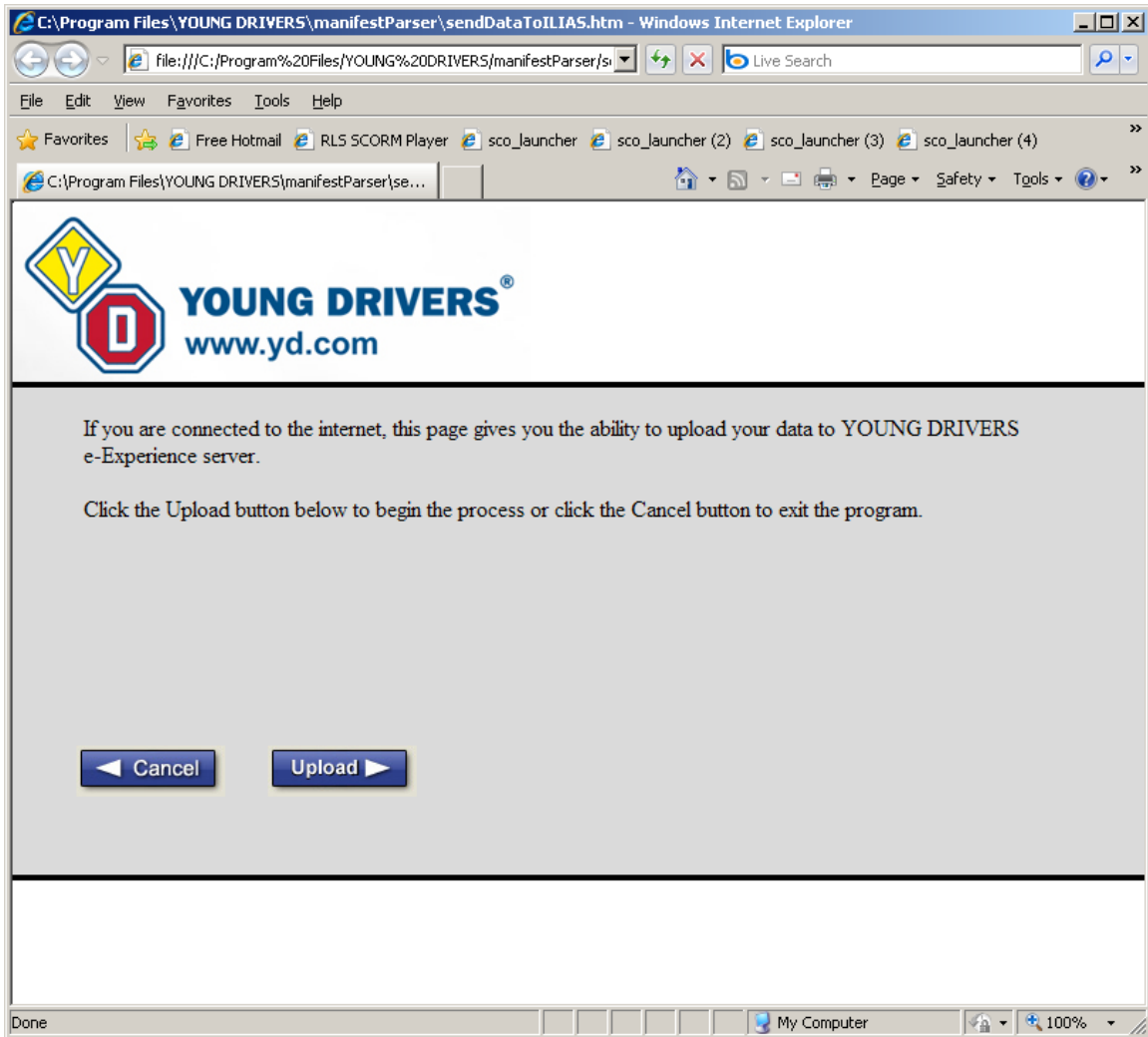


Figure 9: Load the local user data to an LMS.

Example 3:

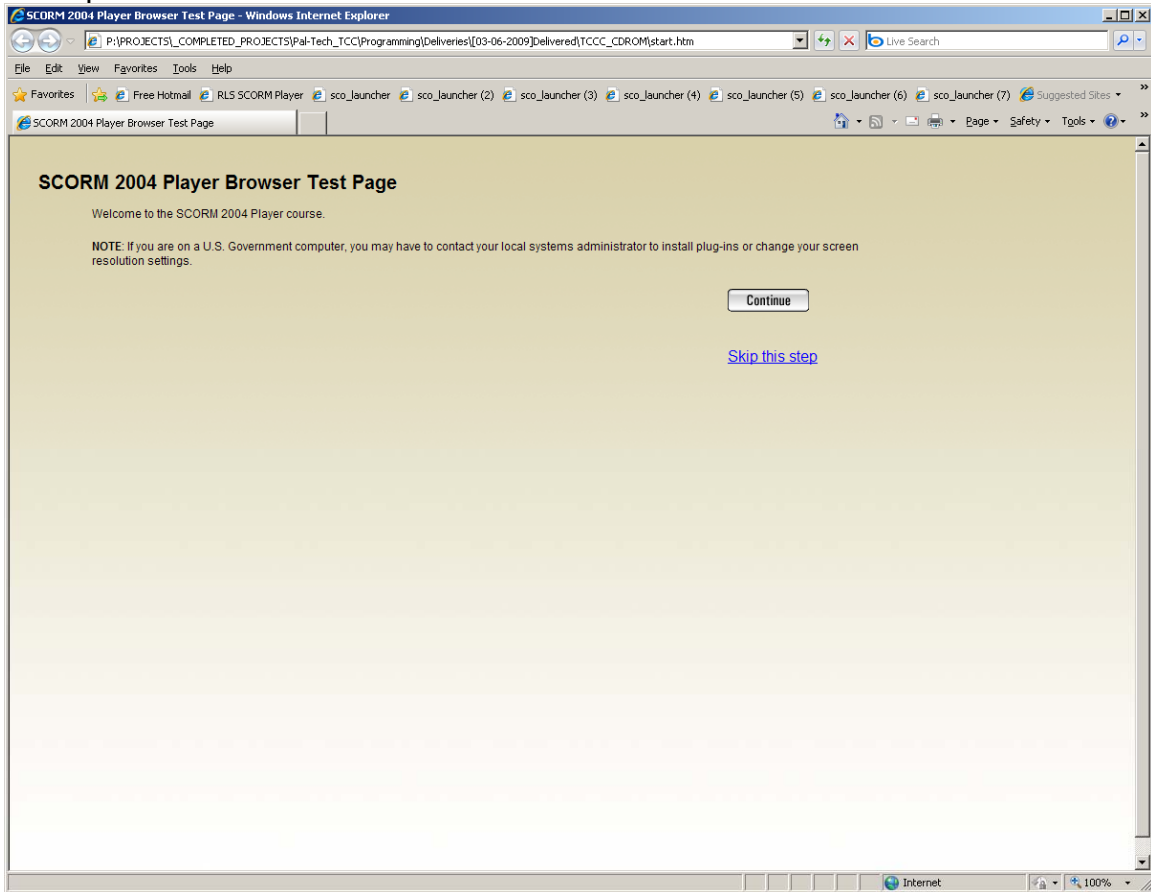


Figure 10: Browser and plugin check prior to launching the content.

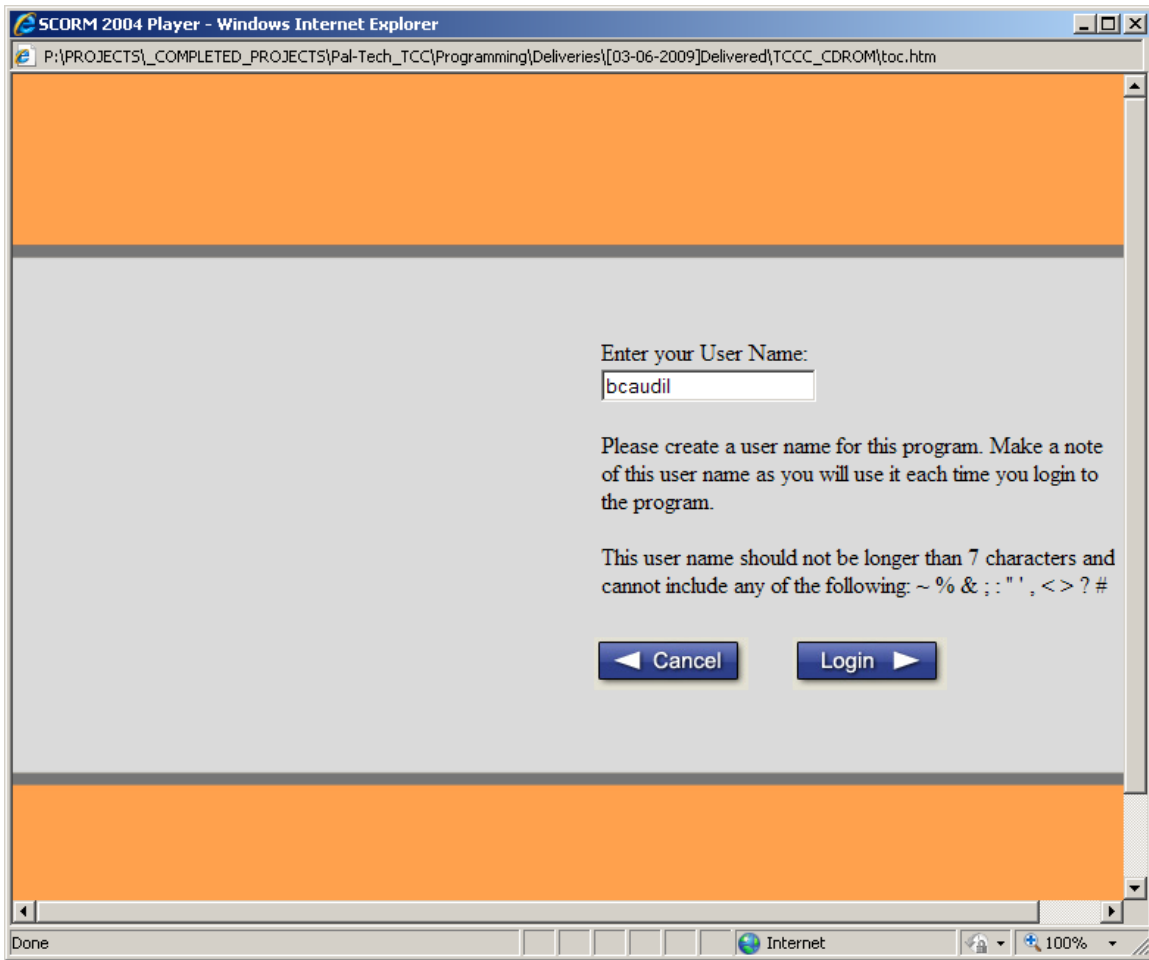


Figure 11: User name login.

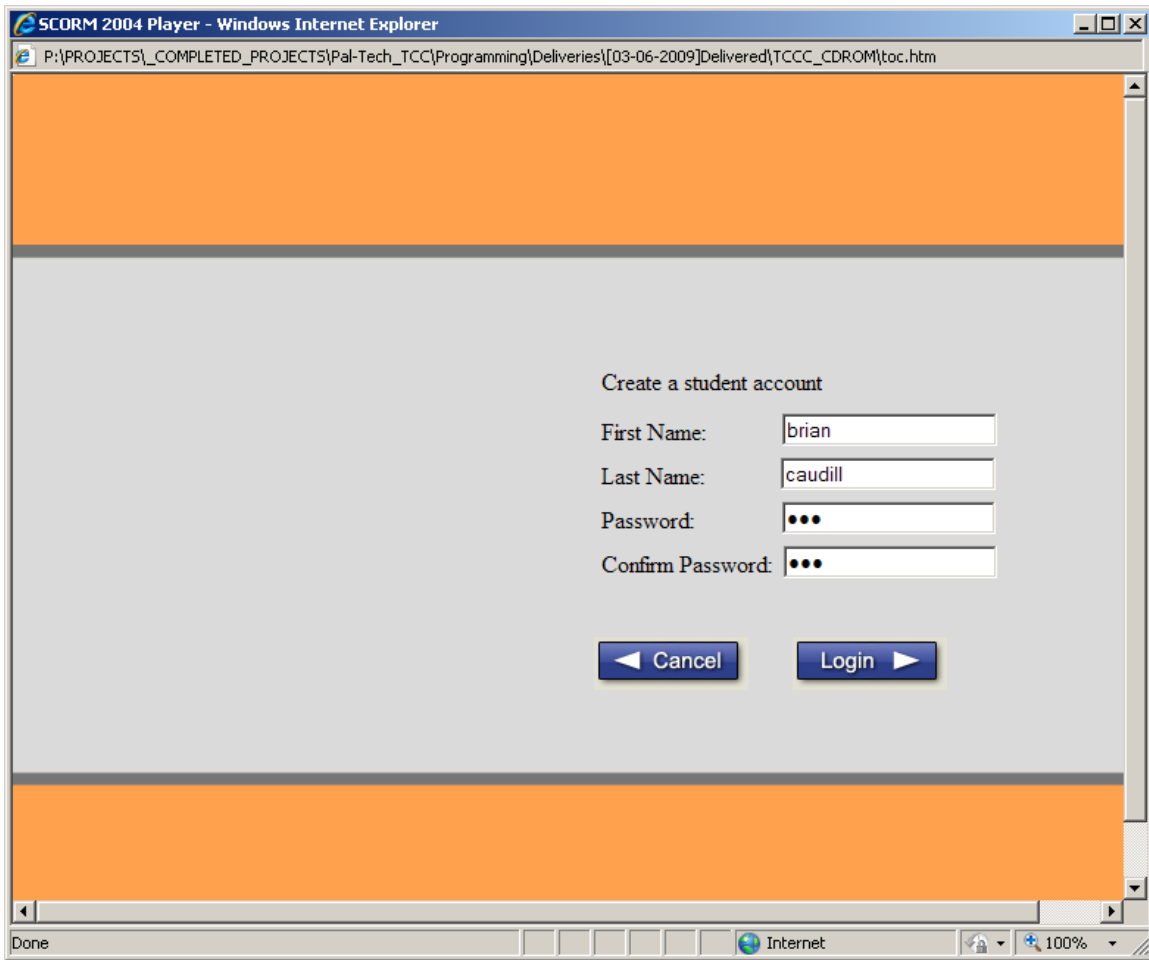


Figure 12: Create a user account.

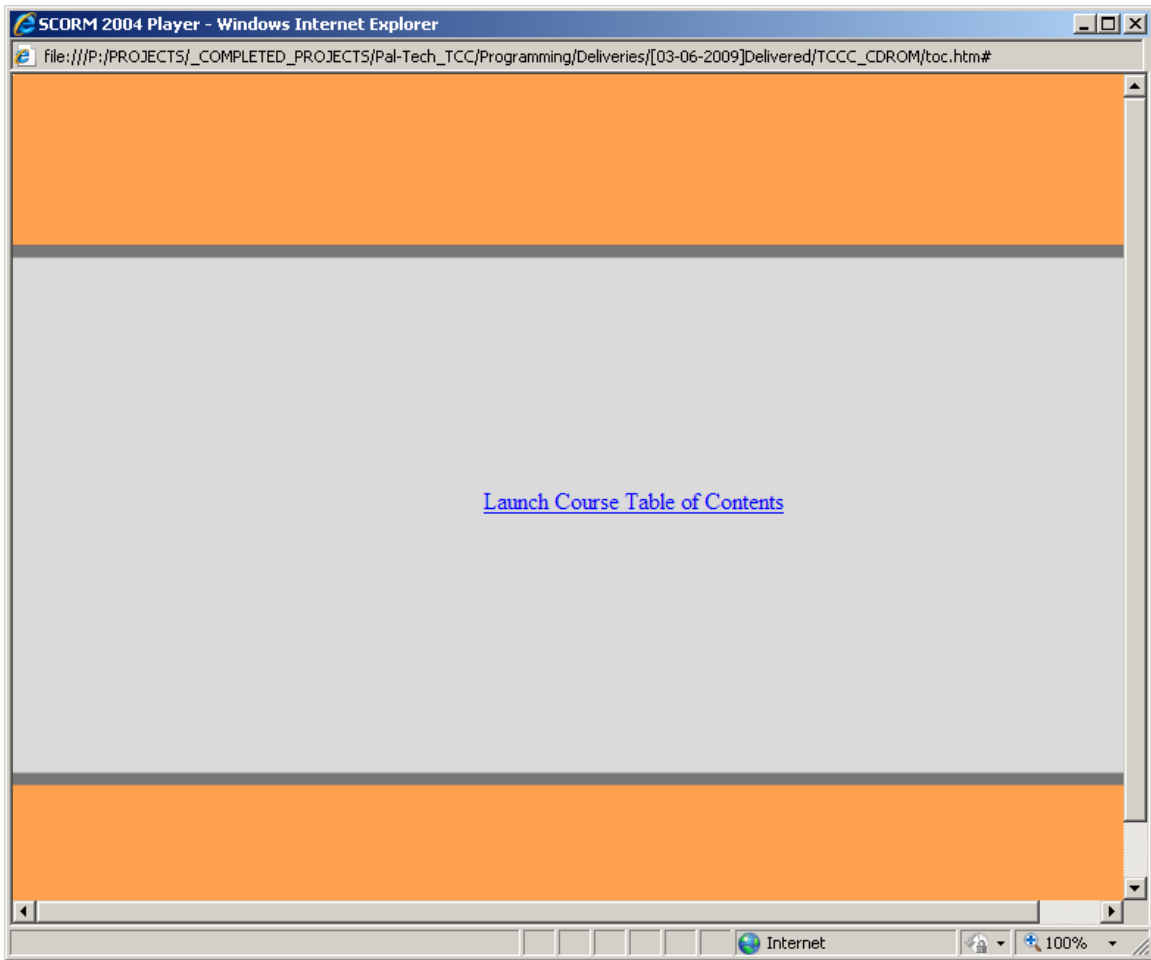


Figure 13: Launch the Table of Contents

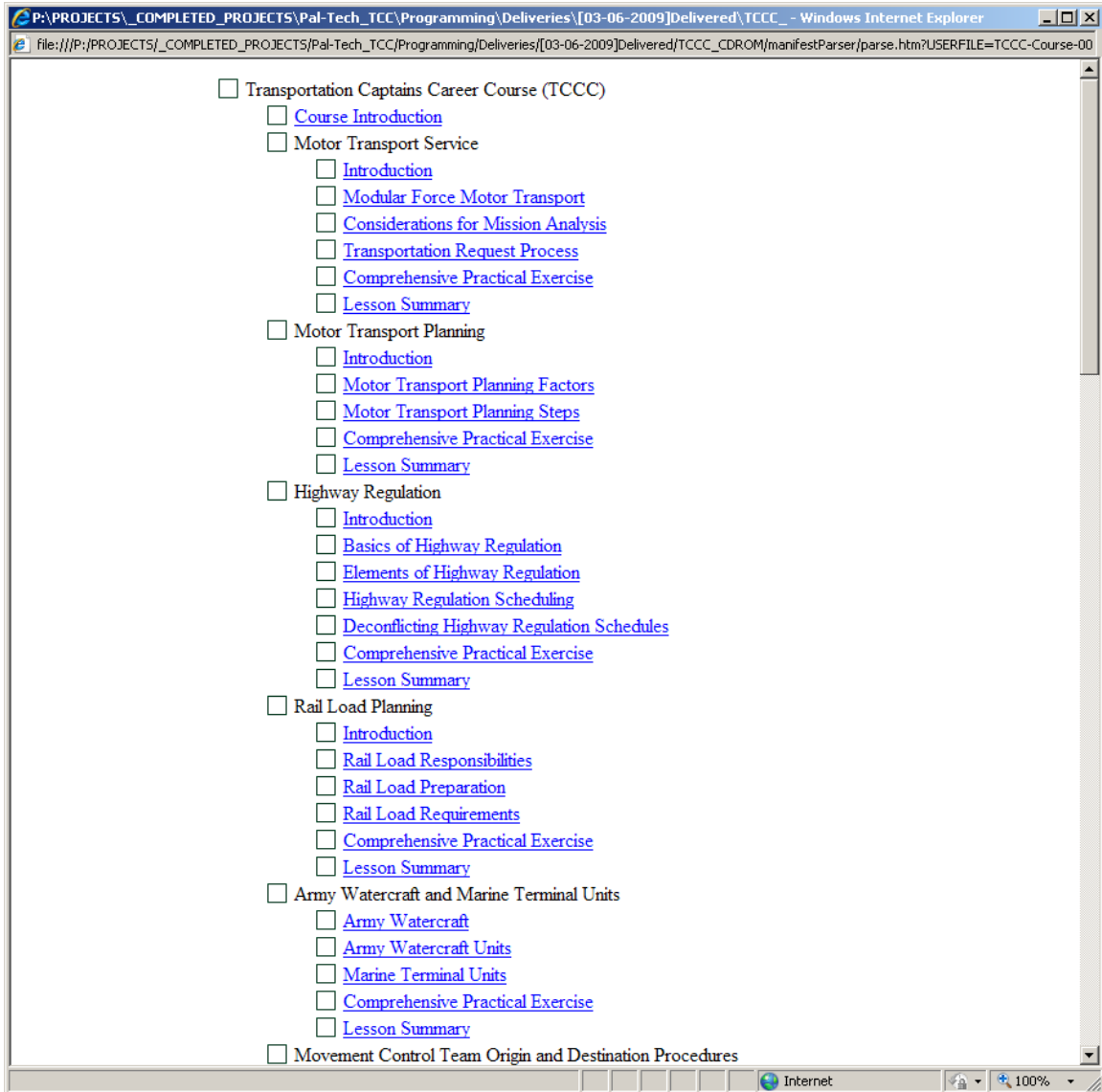


Figure 14: Select any item on the Table of Contents to launch the associated Content Object.